

Guide to Fixing Pump Failure Issue

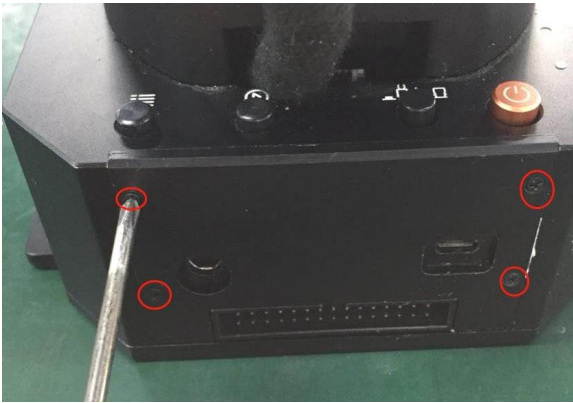
There are mainly 2 reasons which causes the pump not able to work properly.

A, The resistor on the PCBA is burn out;

B, Pump is broken.

A, Fix the resistor issue by soldering

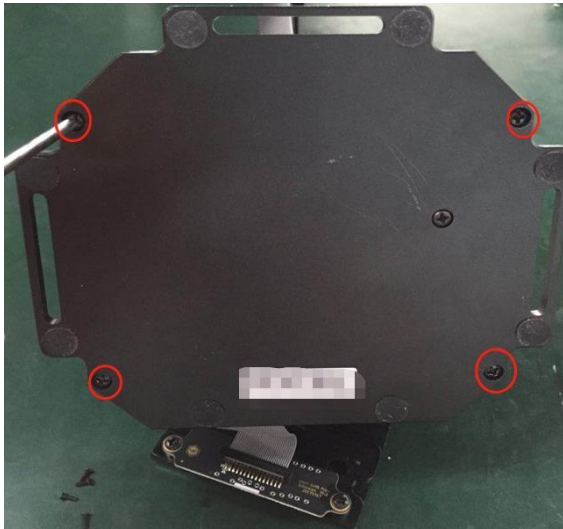
1. Remove 4 M2*5 screws on the base side cover.



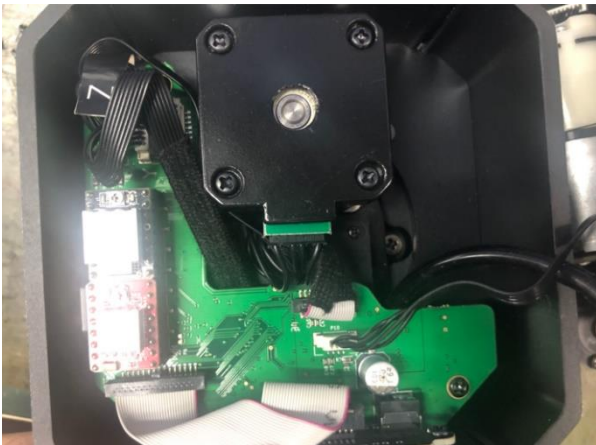
2. Remove the base side cover.



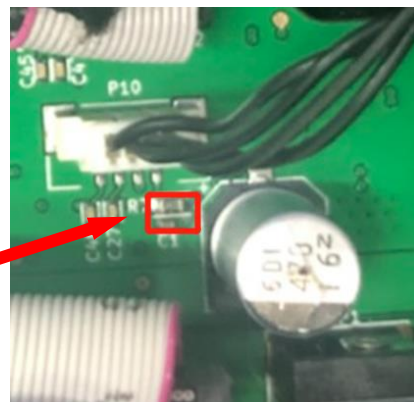
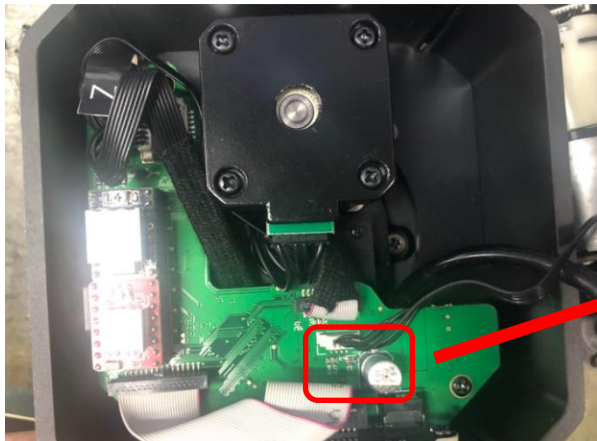
3. Remove 4 M3*5 screws on the bottom of the uArm base



4. Remove the base cover and we could find the mother board



5. Bypass the resistor by soldering



B, Replace the pump

1. Remove the pump of the uArm Swift Pro

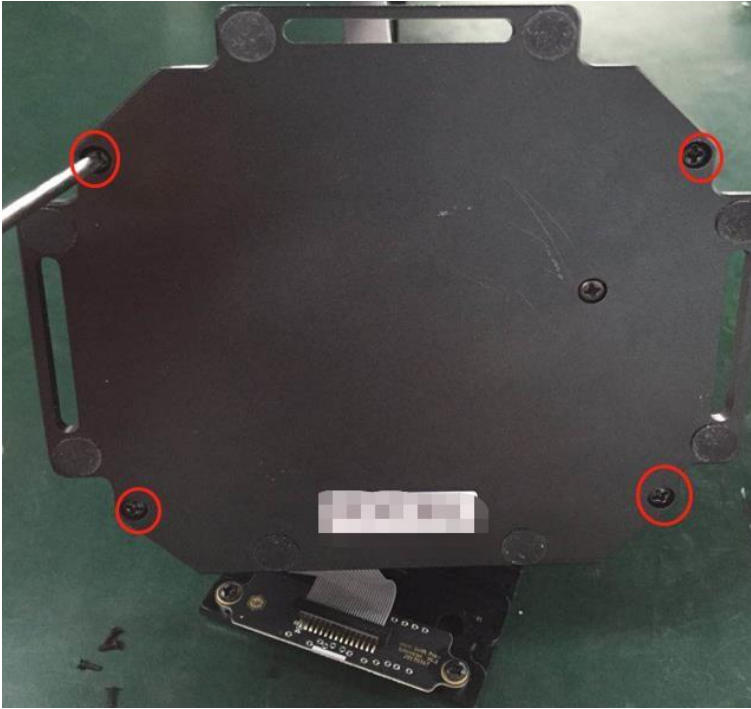
1.1 Remove the 4 pcs M2*5 screws on the base side cover.



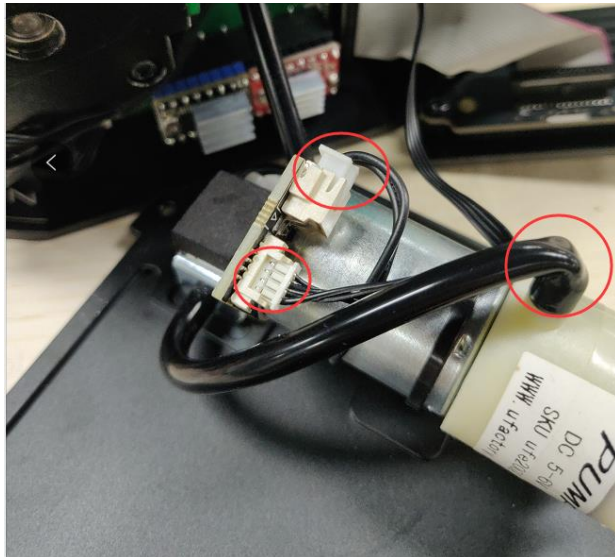
1.2 Remove the base side cover.



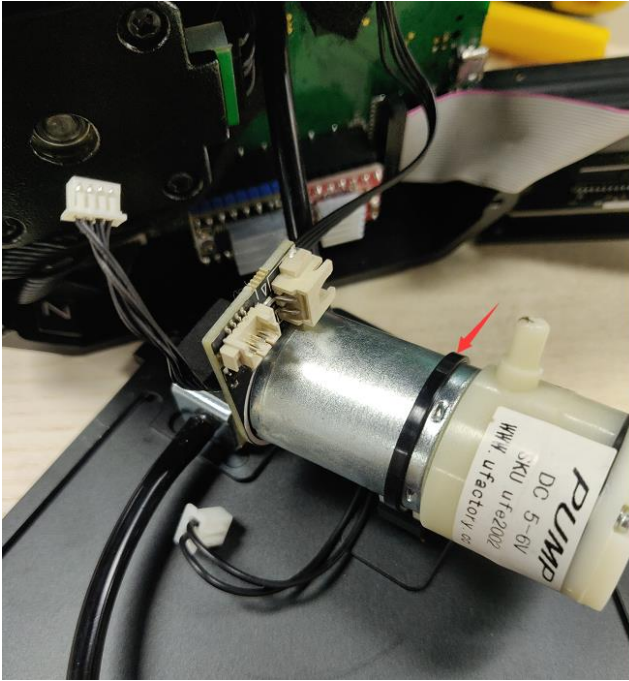
1.3 Remove 4 M3*5 screws on the bottom of the uArm base bottom cover.



1.4 Remove all the cables and the pipeline from the pump.



1.5 Cut the cable tie which is used to fix the pump.

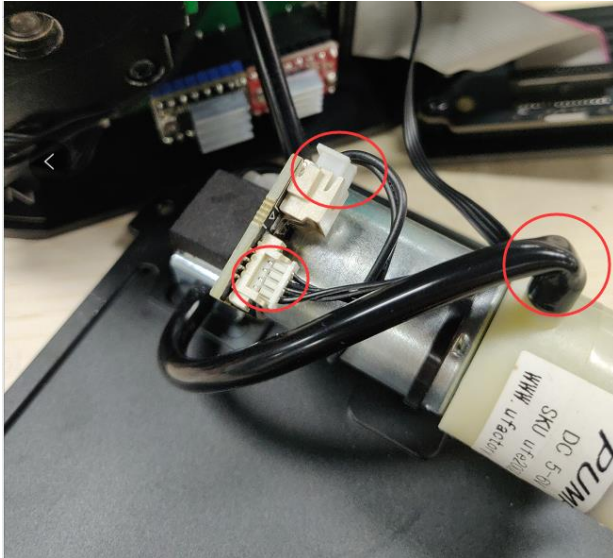


2. Install the pump of the uArm Swift Pro

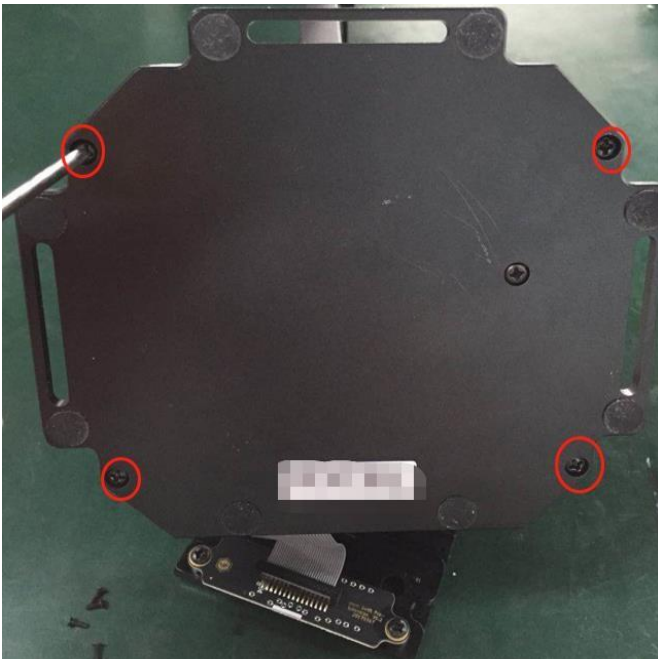
2.1 Replace a new pump, fix it with a new cable tie.



2.2 Connect all the cables and tube



2.3 Fix 4 M3*5 screws on the bottom of the uArm base bottom cover.



2.4 Install the base side cover and fixed 4 M2*5 screws.

